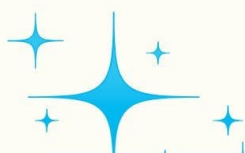


Bluejay Bulletin

Where it is great to be a bluejay!

www.newman.esu8.org



NGPS ORIENTATION/REGISTRATION

MEETING AGENDA

Tuesday, August 5, 2025
3:00 PM – 6:00 PM

Parents

Please attend 1 parent session, and other meetings if they pertain to you.

K-12 Parent Session #1

Welcome and Introduction, Attendance, Calendar, Cell Phones, JMC, Computer Information, Online Resources, Student Handbook, and more

Title I Parent Meeting

3:00 PM
Media Center

K-12 Parent Session #2

Welcome and Introduction, Attendance, Calendar, Cell Phones, JMC, Computer Information, Online Resources, Student Handbook, and more

Title I Parent Meeting

4:00 PM
Media Center

K-12 Parent Session #3

Welcome and Introduction, Attendance, Calendar, Cell Phones, JMC, Computer Information, Online Resources, Student Handbook, and more

Title I Parent Meeting

5:00 PM
Media Center

Senior Parent Meeting @ 5:15 in Mr. Rossow's Room

Athletic/ Activities Meeting @ 5:30 in Mr. McCloud's Room

Notes : Please stop and see Christie and Donna.

HS Hallway-See Christie for registration, lunch, and payment information.

Computer Lab-See Donna to update JMC and get the latest information on the webpage.





Hello, everyone and welcome back! We are looking forward to a great school year! We can't wait to see smiling students, teachers, and staff in the building. As always the back to school routine can be difficult for students and parents alike. Please make sure your child is getting enough sleep, telling you about their classes, and letting us know about any concerns they may have. Our top priorities are keeping everyone safe, healthy, and ready to learn. I wish everyone a great year!

Principal Erin Forre





Welcome To Our New Staff Members



Amanda Redler

Hello Bluejays! My name is Amanda Redler and I'm thrilled to be joining Newman Grove Public School as your 4th-7th Math teacher. I am coming over from St. Edward Public School where I taught 6th grade for the past 3 years. I am certified in elementary education, middle school mathematics, and have my masters degree in K-6 math. I am excited to hang onto my Panther pride and love that I will see my former students during practices and sporting events! I have a passion for teaching math and building lasting relationships with my students.

My husband David and I live in Albion with our 3 children! Nyla will be starting her sophomore year of college at UNK, Camden is a Junior in high school, and Karrah is an 8th grader. Outside of school I like to stay very busy selling real estate and chasing my kids to all of their sporting events. When I do have a second to myself, you can find me reading a book, binging Netflix, or walking my 3 dogs. When you see me, please don't hesitate to

say hello or ask me questions! I look forward to joining this great team at Newman Grove Public School!

Pam Forkner

Hello Bluejay family, I'm Pam Forkner. I am going to be your new food service manager. I'm thrilled to join this school, bringing 8 years of experience from school lunch programs and nursing home dietary roles. Born and raised in Independence, Missouri my husband and I have shared 16 years of marriage, blessed with 7 children and 13 grandchildren. After moving to Nebraska 11 years ago we settled in Newman Grove. Currently, two children and a grandson live with us. Our daughter Fancy is a Newman Grove sophomore, while son Tracy, a Boone Central graduate, will pursue welding at Central Community College. Our grandson Keoni, a senior at Newman Grove, resides with us. Last year, I faced a head and neck cancer diagnosis, but I'm now seven months cancer-free. Family time brings me immense joy.



Kc Fiala



My name is Kc Fiala (Kc is my full name not short for anything) I was born and raised in Omaha and I have two sisters. I moved to Newman Grove about a year ago (slight culture shock). It didn't take long for me to realize that this is Home.

I have a background in healthcare, working with people with dementia and then becoming a Certified Registered Behavior Therapist working with kiddos with special needs. I truly enjoy helping people.

I am a bonus mom to two beautiful teenage girls 13 and 15. Who keeps me quite busy. For fun I like to restore old furniture to make it fun and spend time with my family.

Board of Education Meeting June 9, 2025

- The meeting was called to order at 3:00 p.m.
- All members were present, with the exception of David Fowlkes and Becky Wallin. Others in attendance: Superintendent Warren, Principal Forre, Assistant Principal Sauser and Christie Wallin.
- The Open Meetings Act was posted in the room in accordance with the law.
- Approved the agenda as published.
- Minutes of the May 12, 2025 regular meeting were approved as printed.
- The next regular meeting is scheduled for Monday, July 14, 2025 at 7:30 p.m.
- Mrs. Forre presented her principal's report to the board, which included: Continuous Improvement-beginning year 3 of a 5 year cycle; Summer School-taught by Mrs. Karla Patzel and Mrs. Ashley Warren; Back to School Information/Registration-August 5, 2025 3:00-6:00 p.m.; ADVISER-year-end reports; Staff & Student Handbooks-will be available to be approved later this summer.
- Mr. Warren presented his superintendent's report to the board, which included: Applied Connective-working on updating door fabs. Intercom system is complete; New steps on stage are complete; Locker Rooms/Bathrooms update: Tile to be removed, Color for floor picked out, Waiting on plumbing quotes; Summer Music Camp was hosted last week-thank you Mrs. Albracht; Summer weights have started; Youth volleyball and basketball camps have all taken place; Youth football will start this week.
- Mrs. Sweeter had her counselor's report available for the board to review.
- Approved a calendar change - February 25, 2026 will now be a student school day.
- Approved advertising for an additional paraprofessional position.
- Approved a renewal agreement with the City of Newman Grove for 2 years.
- Approved amendment to Policy 1002 - Creation, Amendment, and Distribution of Policies.
- Approved amendment to Policy 2006 - Complaint Procedure.
- Approved amendment to Policy 2008 - Meetings.
- Approved amendment to Policy 3003 - Bidding for Construction, Remodeling, Repair, or Site Improvement.
- Approved amendment to Policy 3004.1 - Fiscal Management for Purchasing and Procurement Using Federal Funds.
- Approved amendment to Policy 3023 - Record Management and Retention.
- Approved amendment to Policy 3026 - Handbooks.
- Approved amendment to Policy 3036 - Purchasing Credit Card Program.
- Approved amendment to Policy 3043 - Design Build Contracts.
- Approved amendment to Policy 3047 - Data Breach Response.
- Approved amendment to Policy 3057 - Title IX - Slim Option.
- Approved Policy 4051 - Staff and District Social Media Use.
- Approved amendment to Policy 4057 - Superintendent Evaluation.
- Approved amendment to Policy 4059 - Behavioral and Mental Health Training.
- Approved amendment to Policy 5001 - Compulsory Attendance and Excessive Absenteeism.
- Approved amendment to Policy 5015 - Protection of Pupil Right & Policy 5018 - Parent Involvement in Education Practices.
- Approved amendment to Policy 5016 - Student Records.
- Approved amendment to Policy 5031 - Student Appearance.
- Approved amendment to Policy 5034 - Handbooks.
- Approved amendment to Policy 6031 - Emergency Exclusion.
- Approved amendment to Policy 6034 - Concussion Awareness.
- Approved amendment to Policy 6044 - Participation and Assignment of Athletic Teams.
- Approved adoption of New Policy 6045 (one hour) - Behavioral Intervention.
- Accepted the Treasurer's Report as presented.
- Approved the payment of claims totaling \$316,083 (General Fund); \$1,298.70 (Depreciation Fund); and \$1,102.14 (Building Fund).
- The meeting was adjourned at 3:59 p.m.

NEWMAN GROVE PUBLIC SCHOOLS



*Welcomes You Back to
School*

**Where do I go on
the 1st day?**

**Everyone will enter through the
main entrance**

- Doors open at 7:45 a.m.
- PK-6 grade students will be greeted by their teacher
- 7th-12th grade students please gather in the gym at 8:00 a.m.

**Dismissal is at 1:00 p.m. on this
day**



Raise Money for the Newman Grove PTO

The NGPTO would like to invite you to participate in "The Save-A-Label" program which helps non-profit organizations raise money. This is an extremely successful program that over 13,000 non-profit groups participate in. Just save the labels of Best Choice products and our group will earn \$.03 for each Best Choice UPC symbol redeemed. Thank you for your support!!



Parental Involvement Meeting July 14, 2025

- The meeting was called to order at 7:20 p.m.
- All members were present, with the exception of Eric Stone and Ginger Buhl-Jorgensen. Others in attendance: Superintendent Warren, Assistant Principal Sauser and Christie Wallin.
- The Open Meetings Act was posted in the room in accordance with the law.
- Approved the agenda as published.
- Approved Policy 5057 - District Title 1 Parent and Family Engagement Involvement.
- The meeting was adjourned at 7:25 p.m.



Board of Education Meeting July 14, 2025

- The meeting was called to order at 7:30 p.m.
- All members were present, with the exception of Eric Stone and Ginger Buhl-Jorgensen. Others in attendance: Superintendent Warren, Assistant Principal Sauser and Christie Wallin.
- The Open Meetings Act was posted in the room in accordance with the law.
- Approved the agenda as published.
- Minutes of the June 9, 2025 regular meeting were approved as printed.
- The next regular meeting is scheduled for Monday, August 11, 2025 at 7:30 p.m.
- Mr. Warren presented his superintendent's report to the board, which included: Gym floor remand - next summer; Bathroom & locker room remodel - update; Mid-Nebraska Lutheran Home daycare - discussion.
- Approved Policy 2008 - Meetings.
- Approved Policy 5002 - Admission of Students.
- Approved Policy 5003 - Admission of Part-Time Students - option 1 and choice B for 5 credit hours to participate.
- Approved a contract with Applied Connective Technology for technical support.
- Approved the transfer of \$250,000 from general fund to depreciation fund - earmarked for mini busses.
- Approved Penny & Associates to complete the school audit.
- Approved Student, Staff and Activity Handbooks for 2025/2026 school year.
- Accepted the Treasurer's Report as presented.
- Approved the payment of claims totaling \$286,951.55 (General Fund); \$1,847.31 (Depreciation Fund); and \$50,378.03 (Building Fund).
- The meeting was adjourned at 8:07 p.m.



Student Fees Policy Meeting July 14, 2025

- The meeting was called to order at 7:25 p.m.
- All members were present, with the exception of Eric Stone and Ginger Buhl-Jorgensen. Others in attendance: Superintendent Warren, Assistant Principal Sauser and Christie Wallin.
- The Open Meetings Act was posted in the room in accordance with the law.
- Approved the agenda as published.
- Approved student fees as presented.
- The meeting was adjourned at 7:30 p.m.



SCAN
qualifying receipts
in the app



SUBMIT
qualifying digital
receipts in the app



CONNECT
your Walmart and
Box Tops accounts

NEBRASKA SMART
SUCCESS MADE ACCESSIBLE THROUGH RURAL TUTORING

FREE VIRTUAL TUTORING FOR K-12 STUDENTS

Pre-scheduled times or on-demand with qualified tutors from Chadron State College, Peru State College, and Wayne State College

nscs.edu/NebraskaSMART



Personal Possessions at School

Parents/guardians of all students are asked to label (first initial and last name) all P.E. clothes and shoes, as well as personal items and school supplies.

All 7-12 grade students are issued combination locks at the beginning of the school year for their hallway and athletic/p.e. lockers. Students are strongly encouraged to use their locks to secure clothing and other possessions when not in use. All K-6 students are assigned a locker without a lock.

Additionally, students are asked to keep their combinations confidential and keep lockers locked when not in use to help eliminate misplaced items.



NG/SE ATHLETIC TICKET SALES



All-season athletic tickets will be available for the home 2025-2026 NG/SE athletic events. These tickets are good only for the scheduled HOME athletic events (excluding tournaments). Admission to school plays are NOT included with these ticket prices. Season tickets are available through the office. We appreciate your support and attendance at all school activities.

Tickets are available as follows:

Individual All Year Pass - \$90 - Adults (Any person beyond high school)

Golden Age (No Charge) - For people age **65 and over**. The golden age pass is non-expiring; therefore, these passes do not need to be renewed each year once it is obtained.

Student - Free - PK-12th Grade

Admission Prices for 2025-2026 are:

Varsity/JV Contests **Adults - \$6.00** **Students - Free**

Middle School Contests **Free Admission for all**

Please come support the students!



Bluejay Shirt Orders

There will be a PTO Bluejay shirt order form available at Tuesday's registration night and the preschool parent meeting. The forms will also be available in the office. If you would like one you may stop by or call and we can send one home with your child.



IMMUNIZATION REQUIREMENTS

(Source: Department of Health/Human Services)



Students entering K-12th Grade; including transfer students from outside of Nebraska; and any foreign students

- * 3 doses of DTaP, DT or Td vaccine, one given on or after the 4th birthday, Tdap booster for 7th grade (must contain pertussis booster);
- * 3 doses of Polio vaccine;
- * 3 doses of Hepatitis B vaccine;
- * 2 doses of MMR vaccine, given on or after 12 months of age and separated by at least one month;
- * 2 doses of varicella (chicken pox) vaccine given on or after 12 months of age. Written documentation (including year) of varicella disease from parent, guardian, or health care provider will be accepted.

Nebraska State Law states that students **will not** be admitted to school without the minimum immunizations listed here. Waivers will be allowed if your doctor states the child cannot receive a specific immunization. This will have to be on a written form provided by the school and signed by the physician. Students entering Newman Grove Schools for the first time must provide a copy of their birth certificate and immunization records.

Please provide immunization records to the school!

The Bluejay Way On the Bus....



Be Respectful

- Personal Space
- Appropriate language
- Hands and feet to yourself
- Use kind words

Be Responsible

- Clean up after yourself
- Keep items in your seat
- Be responsible for YOU

Be Safe

- Go directly to your seat
- Sit with your back against the seat
- Voice level lower than a level 2
- Talk to the people around you only
- Conversations with the driver when stopped only

THE BLUEJAY WAY

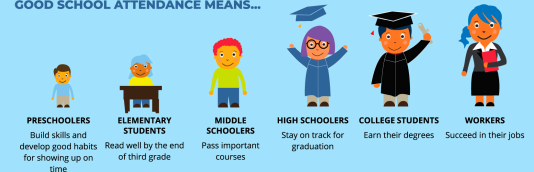
Student Absences and Requests for Assignments

Whenever your child is absent from school, please phone the school and let the office staff know (unless you sent a written note in advance). This information is needed for attendance records and your child's safety.

In the event you feel it is necessary to get assignments when your child has missed more than one day of school, that request should be made to the High School Office (447-6294) **NO LATER THAN 9:00 AM** and can be picked up no earlier than 3:00 p.m. Please remember that it takes time to gather the necessary materials from the student's desks/lockers and instructors. Your cooperation in following the 9 a.m. deadline for both elementary and secondary students is appreciated.

ATTEND TODAY, ACHIEVE TOMORROW

GOOD SCHOOL ATTENDANCE MEANS...



Non-Discrimination

Newman Grove Public Schools does not discriminate on the basis of race, color, national origin, sex, disability, marital status, or age in admission or access to, or treatment of employment in, its programs or activities. It is the intent of Newman Grove Public Schools to comply with both the letter and the spirit of the law in making certain discrimination does not exist in its policies, regulations and operations. Grievance procedures have been established for anyone who feels discrimination has been shown by Newman Grove Public Schools. Inquiries regarding grievance procedures or the application of these policies of nondiscrimination can be obtained by contacting the Superintendent of Schools; Box 370; Newman Grove, NE 68758 or call 816-268-0550 for Title IX, Title VI, Section 504.

Newman Grove Public Schools no discrimina en la base de raza, color, origen nacional, sexo, discapacidad, estado civil, o edad en admision o acceso a, o tratmiento de empleo, programas, o actividades. Es el intento de Newman Grove Schools de seguir con la carta y el espíritu de la ley haciendo que no exista sierra discriminacion en estas políticas, regulaciones, y operaciones. Los procesos de queja han sido establecidos para cualquier persona que sienta discriminacion que ha sido enseñada por Newman Grove Schools. Inquarios regardando procesos de queja o la aplicación de estas pólizas de no discriminacion pueden ser obtenidas por contacto al Superintendente de las Esquelas; Box 370; Newman Grove, NE 68758 o llame 816-268-0550 por Title IX, Title VI, Section 504.



School Breakfast & Lunch Program

Children need healthy meals to learn. The Newman Grove Public School District offers healthy meals every school day. Current lunch prices are: \$3.15 (K-6); \$3.25 (7-12). 7-12 Students may also purchase a second for \$1.80. Breakfast is \$2.30. Adult prices \$5.00 lunch; \$2.85 breakfast. Additional milk (1/2) pint for 50 cents will be available to elementary and secondary students. K-3 students have the option of purchasing additional milk for break. The price is \$40.00 per semester for additional milk. This money is non-refundable.

We encourage you to fill out a free/reduced hot lunch application. Hot lunch applications are included in this newsletter. They are also available electronically on JMC. Printed copies are available upon request. Contact Christie Wallin at 447-6294 if you have questions regarding the application process.



Nebraska Children's Health Insurance Program (CHIP)

In Nebraska, CHIP is an expansion of Medicaid as health care coverage for qualified children who are without other health insurance and who do not qualify for Medicaid. Federally called the Children's Health Insurance Program (CHIP), it provides the same services covered under Medicaid.

In order to qualify for this benefit program, you must be a resident of Nebraska, under 19 years of age or be a primary care giver with a child under the age of 19, not covered by health insurance (including Medicaid), and a U.S. national, citizen, legal alien, or permanent resident.

To apply online for Nebraska CHIP and all other benefit programs administered by the Nebraska Department of Health and Human Services, please fill out an application using ACCESSNebraska at (<http://www.ACCESSNebraska.ne.gov>)

Or you may call 1-855-632-7633 Monday thru Friday 8:00 a.m. - 5:00p.m. (CST)



2025-2026 Officers



Senior Class (Class of 2026)

President: Kailey Patzel
Vice-President: Aubree Whitaker
Secretary/Treasurer: Serenity Strong
Student Council: Keira Voelker
Student Council: Keoni Loyd

Junior Class (Class of 2027)

President: Allyx Forre
Vice-President: Piper Jarecki
Secretary/Treasurer: Jayden Benson
Student Council: Isabella Santarosa
Student Council: Madysen Wiese

Sophomores (Class of 2028)

President: Oliver Kaufman
Vice-President: Brylee Patzel
Secretary: Beckett Jorgensen
Treasurer: Korben Donner
Student Council: Payton Fehringer
Student Council: Fancy Forkner

Student Council

President: Kailey Patzel
Vice-President: Allyx Forre
Secretary/Treasurer: Madysen Wiese

Freshmen (Class of 2029)

President: Griffin Nelson
Vice-President: Ian Chilson
Secretary/Treasurer: Ashton Zoucha
Student Council: Khoen Voelker
Student Council: Elia Jarecki

8th Grade (Class of 2030)

President: Ana Hernandez-Franco
Vice-President: Jayahn Banks
Secretary/Treasurer: Owen Flood
Student Council: Paisley Fritz
Student Council: Natasha Nelson

7th Grade (Class of 2031)

President: Everett Nelson
Vice-President: Hazel Weier
Secretary: Sophia Guthard
Treasurer: James Matson
Student Council: Elizabeth Meyer
Student Council: Sutton Scott

National Honor Society

President: Kailey Patzel
Vice-President: Aubree Whitaker
Secretary/Treasurer: Serenity Strong
Student Council: Allyx Forre

SkillsUSA

President: Isabella Santarosa
Vice-President: Madysen Wiese
Secretary: Austin Schulz
Historian: Isaac Meyer
Student Council: Kellan Morris
Student Council: Jayden Benson

FFA

President: Kailey Patzel
Vice-President: Aubree Whitaker
Secretary: Allyx Forre
Treasurer: Dylan Luetkenhaus
Reporter: Brylee Patzel
Historian: Oliver Kaufman
Sentinel: Owen Kaufman
Parliamentarian: Nate Fowlkes
Student Advisor/Student Council: Piper Jarecki

FBLA

President: Isabella Santarosa
Vice-President: Keira Voelker
Secretary/Treasurer: Madysen Wiese
Reporter/Social Media: Jayden Benson
Student Council: Elise Witchell



Student Accident Insurance

Student accident insurance is available to PK-12 students. School insurance provides partial coverage for accidents and should be viewed only as a SUPPLEMENT to your family's major medical insurance. Students will be insured through Student Assurance Services, Inc. of Stillwater, Minnesota.

Application forms for insurance will be given to the PK-12 grade parents at the information meetings and will be available in the office upon request.

The school district no longer requires you to return the form to the office if you do not wish to purchase the insurance. We do, however, remind those parents wishing to purchase the insurance that coverage does not begin until the office receives full payment.

The Newman Grove School District does not receive a commission on the sale of these policies and is only offering it as a service to its students/parents.

Adequate health and accident insurance is required before your student can participate in athletics. Proof of insurance is required of all athletes prior to the first practice.



PARENT INTRODUCTION TO JMC MESSAGE CENTER

This school year the district will continue to use JMC Message Center for emergency broadcasts, parental outreach and student attendance communications for PK-12 Education.

The system is programmed to call, text or email the primary phone number of parents for a variety of reasons that impact the safety and academic performance of your students. JMC Message Center will be used to complement our emergency preparedness procedures and to inform parents of upcoming school events such as statewide testing and parent meetings.

For this system to work, it is important that parents and guardians keep the office informed of any changes in your phone/cell numbers or you can log into your parent access and update it.

Principals are still accessible for live visits and we will still send home paper-based memoranda. The JMC Message Center is intended to reinforce the district's commitment to remain personally connected to parents.



Child Find

School districts are required to identify children in need of special education services each year. Services needed for children may be arranged within the district or by contracting with another district or agency.

Newman Grove Public School asks you to assist us in our "Nebraska Child Find" efforts. This is an ongoing statewide search for all unserved children with disabilities, ages birth through 21. If you know of a child who is experiencing difficulties with motor development, speech and language, vision, hearing or learning, please refer the parent to the number below. Newman Grove Public School District will provide an educational evaluation at no cost to the parent. If the child qualifies under Nebraska law, a free and appropriate educational program will be developed to meet his/her educational needs.

Please contact the Newman Grove Schools if: a) you suspect your child may have a disability and you would like to obtain an evaluation for your child; or b) your child has been diagnosed with a disability in another district and is eligible for services.

Summary of Child Labor Laws

Children 14 and 15 years of age shall not be permitted to work more than 8 hours a day, 48 hours a week, before the hour of 6:00 a.m. or after the hour of 10:00 p.m. under state law in the summer months. Federal Hour Restrictions are: Not more than 3 Hours on a School Day, Not more than 18 Hours in a School Week, Not more than 8 Hours on a Non-school Day, Not more than 40 Hours in a Non-school Week, and Not before 7 a.m. nor after 7 p.m. (9 p.m. from June 1st through Labor Day).

Children under 16 years of age may not be employed in any work which by reason of the nature of work is dangerous to life or limb, or in which the child's health may be injured or their morals depraved.

Kylie Sweeter, School Counselor, has Employment Certificates available.



Newman Grove Bluejay Meat Boosters

“Scott’s Meat Mission”

The Idea

My husband, Scott Nelson, was a fifth-generation farmer. He worked alongside his father and grandfather raising corn, soybeans, cattle, and hogs. Scott was very good at advocating for things that were important to him - his faith, family, farming, and community. He was passionate about educating others on agriculture and a proud supporter of the FFA. He took pride in raising livestock and loved a great steak or anything made of pork. He disagreed with programs like “Meatless Mondays” and its message that less meat is better for your health and the environment. When Scott became ill in September of 2021 and was diagnosed with leukemia, he was not allowed to step back out on the farm. This was just as devastating to him as the diagnosis. Even while he was sick and receiving treatments, he spoke to school board members, administration, and staff about his idea for “More Meat Mondays.” He wanted to create a booster club of producers and community supporters to provide locally-grown meat for lunches. Scott passed away on August 2, 2022, and I would like to continue his mission.

The Goal - “Scott’s Meat Mission”

Together, with local producers and supporters, we will bring healthy, nutritious, and flavorful meat to the students of Newman Grove Public Schools. The program will provide education on the nutritional value of meat, how animals are raised, where food comes from, and the importance of animal and crop production locally, in Nebraska, and all over the world.

Our goal is to get commitments to the program that will sustain this effort for 3 years. We estimate the need to be a total of \$25,000 to cover the costs associated with this effort.

Ways to Get Involved

- Producers can sign a commitment letter to donate a quality animal. You will receive a receipt for your donation that may provide a tax incentive.
- Monetary donations can be made to Newman Grove Public Schools in the name of Newman Grove Bluejay Meat Boosters. The purpose of this account includes but is not limited to, covering the costs of purchasing and processing meat, nutrition and educational expenses, and program promotion. Monetary donations are tax-deductible.
- All levels of support are welcome and appreciated!

Recognition Program

Bluejay Donor: Meat Donation or \$1000 and up
Prime Donor: \$500 - \$999
Choice Donor: \$250 - \$499
Select Donor: \$100 - \$249

As part of the recognition program, you will...

- Be invited to a program kick-off event at the school each year.
- Receive a program window sticker and be recognized in the school newsletter and website.
- Have your name listed on a program banner that will be displayed at the school if you are a Bluejay, Prime, or Choice Donor.

Student Benefits

- High-quality, good-tasting, locally-raised meat for lunch.
- Opportunities to learn about nutrition and lifelong healthy eating habits.
- Gain an understanding of the importance of animal and crop production locally, in Nebraska, and all over the world.

School Benefits

- The school will be serving Nebraska-grown meat for at least one “More Meat Monday” per month. Processed meat will be in forms requested by the school or specified by the donor. It may include but is not limited to, ground beef, ground sausage, roasts, stew meat, deli meat, hot dogs, sausage links, and bacon. Do understand that the serving sizes will not be affected by this program, those are set by the federal government.
- The administration, school board, and kitchen staff are in support of this program.
- The program will provide students an opportunity to see firsthand the impact of animal and crop production locally and gain an understanding of how each function in our community. It also directly relates to our current Agricultural Education classes and FFA program.
- The school will be saving money by implementing this program. Savings could potentially go towards supporting the FFA greenhouse to grow our own produce for the salad bar and purchasing other food items locally whenever possible.

Donor Benefits

- Promotes meat and agriculture to the next generation.
- Builds positive community relationships.
- Creates markets to sell locally-raised meat and produce to the school and businesses in the future.

Contacts

- Kristin Nelson 402-657-8990 knelson@esu7.org
- Kylie Sweeter 402-447-6294 kylie.sweeter@ngpublicschools.com
- Erin Forre 402-447-6294 erin.forre@ngpublicschools.com
- Josh Warren 402-447-6294 josh.warren@ngpublicschools.com



Newman Grove Bluejay Meat Boosters

“Scott’s Meat Mission”

Name (as you would like it to appear on recognition list): _____

Address: _____

City: _____ State: _____ Zip Code: _____

Phone: _____ Email: _____

Your monetary contribution is tax-deductible and can be made to Newman Grove Public Schools in the name of Newman Grove Bluejay Meat Boosters. The following levels of donation have been established for recognition on a program banner and the school newsletter and website. *Donations need to be received by April 1st of each year to be listed on the banner.

- Bluejay Donor: Meat Donation or \$1000 and up
- Prime Donor: \$500 - \$999
- Choice Donor: \$250 - \$499
- Select Donor: \$100 - \$249

All levels of support are welcome and very much appreciated!

Please send to: Newman Grove Public Schools
Attn: Christie Wallin
PO Box 370
Newman Grove, NE 68758



Please contact Kristin Nelson: 402-657-8990 or knelson@esu7.org with any questions.

Your contribution: _____

Donor Signature: _____

School Representative Signature: _____

NG Bluejay Meat Booster Coordinator Signature: _____

“Scott’s Meat Mission” - Together, with local producers and supporters, we will bring healthy, nutritious, and flavorful meat to the students of Newman Grove Public Schools. The program will provide education on the nutritional value of meat, how animals are raised, where food comes from, and the importance of animal and crop production locally, in Nebraska, and all over the world.

Newman Grove Public Schools

August 1, 2025

Dear Parent/Guardian:

Children need healthy meals to learn. **Newman Grove Public Schools** offers healthy meals every school day. Breakfast costs **\$2.30 K-12**; lunch costs **\$3.15 K-6, \$3.25 7-12**. **Your children may qualify for free or reduced price meals.** Reduced price is **\$.30** for breakfast and **\$.40** for lunch. If your child(ren) qualified for free or reduced price meals at the end of last school year, you must submit a new application by **September 18, 2025** in order to avoid an interruption in meal benefits.

This packet includes an application for free or reduced price meal benefits and a set of detailed instructions. Below are some common questions and answers to help you with the application process.

1. WHO CAN GET FREE OR REDUCED PRICE MEALS?

- All children in households receiving benefits from the Supplemental Nutrition Assistance Program (SNAP), Temporary Assistance for Needy Families (TANF) or the Food Distribution Program on Indian Reservations (FDPIR) are eligible for free meals.
- Foster children that are under the legal responsibility of a foster care agency or court are eligible for free meals.
- Children participating in their school's Head Start program are eligible for free meals.
- Children who meet the definition of homeless, runaway, or migrant are eligible for free meals.
- Children may receive free or reduced price meals if your household's income is within the limits on the Federal Income Eligibility Guidelines. Your children may qualify for free or reduced price meals if your household income falls at or below the limits on this chart.

2. HOW DO I KNOW IF MY CHILDREN QUALIFY AS HOMELESS, MIGRANT, OR RUNAWAY? Do the members of your household lack a permanent address? Are you staying together in a shelter, hotel, or other temporary housing arrangement? Does your family relocate on a seasonal basis? Are any children living with you who have chosen to leave their prior family or household? If you believe children in your household meet these descriptions and haven't been told your children will get free meals, please call or e-mail **Superintendent Josh Warren, Newman Grove Public Schools, (402) 447-6294; josh.warren@ngpublicschools.com**

3. DO I NEED TO FILL OUT AN APPLICATION FOR EACH CHILD? No. *Use one Free and Reduced Price School Meals Application for all students in your household.* We cannot approve an application that is not complete, so be sure to fill out all required information. Return the completed application to: **Christie Wallin, Newman Grove Public Schools, Box 370; Newman Grove, NE 68758 or call (402) 447-6294.**

4. SHOULD I FILL OUT AN APPLICATION IF I RECEIVED A LETTER THIS SCHOOL YEAR SAYING MY CHILDREN ARE ALREADY APPROVED FOR FREE MEALS? No, but please read the letter you got carefully and follow the instructions. If any children in your household were missing from your eligibility notification, contact **Christie Wallin at (402) 447-6294** immediately.

5. CAN I APPLY ONLINE? You are encouraged to complete an online application instead of a paper application if your school district makes this option available. The online application has the same requirements and will ask you for the same information as the paper application. Visit **newmangroveonlinejmc.com/Parent/online_parent_lunch.axps** to begin or to learn more about the

online application process. Contact **Christie Wallin at (402) 447-6294** if you have any questions about the online application.

6. MY CHILD'S APPLICATION WAS APPROVED LAST YEAR. DO I NEED TO FILL OUT A NEW ONE? Yes. Your child's application is only good for that school year and for the first few days of this school year. You must send in a new application unless the school told you that your child is eligible for the new school year. If you do not send in a new application that is approved by the school or you have not been notified that your child is eligible for free meals, your child will be charged the full price for meals.
7. I GET WIC. CAN MY CHILDREN GET FREE MEALS? Children in households participating in WIC may be eligible for free or reduced price meals. Please send in an application.
8. WILL THE INFORMATION I GIVE BE CHECKED? Yes. We may also ask you to send written proof of the household income you report.
9. IF I DON'T QUALIFY NOW, MAY I APPLY LATER? Yes, you may apply at any time during the school year. For example, children with a parent or guardian who becomes unemployed may become eligible for free and reduced price meals if the household income drops below the income limit.
10. WHAT IF I DISAGREE WITH THE SCHOOL'S DECISION ABOUT MY APPLICATION? You should talk to school officials. You also may ask for a hearing by calling or writing to: **Superintendent Josh Warren; Newman Grove Public Schools, Box 370; Newman Grove, NE 68758; (josh.warren@ngpublicschools.com).**
11. MAY I APPLY IF SOMEONE IN MY HOUSEHOLD IS NOT A U.S. CITIZEN? Yes. You, your children, or other household members do not have to be U.S. citizens to apply for free or reduced price meals.
12. WHAT IF MY INCOME IS NOT ALWAYS THE SAME? List the amount that you normally receive. For example, if you normally make \$1000 each month, but you missed some work last month and only made \$900, put down that you made \$1000 per month. If you normally get overtime, include it, but do not include it if you only work overtime sometimes. If you have lost a job or had your hours or wages reduced, use your current income.
13. WHAT IF SOME HOUSEHOLD MEMBERS HAVE NO INCOME TO REPORT? Household members may not receive some types of income we ask you to report on the application, or may not receive income at all. Whenever this happens, please write a 0 in the field. However, if any income fields are left empty or blank, those will also be counted as zeroes. Please be careful when leaving income fields blank, as we will assume you meant to do so.
14. WE ARE IN THE MILITARY. DO WE REPORT OUR INCOME DIFFERENTLY? Your basic pay and cash bonuses must be reported as income. If you get any cash value allowances for off-base housing, food, or clothing, it must also be included as income. However, if your housing is part of the Military Housing Privatization Initiative, do not include your housing allowance as income. Any additional combat pay resulting from deployment is also excluded from income.
15. WHAT IF THERE ISN'T ENOUGH SPACE ON THE APPLICATION FOR MY FAMILY? List any additional household members on a separate piece of paper, and attach it to your application. Contact **Christie Wallin, Newman Grove Public Schools; (402) 447-6294** to receive a second application.
16. MY FAMILY NEEDS MORE HELP. ARE THERE OTHER PROGRAMS WE MIGHT APPLY FOR? To find out how to apply for SNAP or other assistance benefits, please go online to ACCESSNebraska.ne.gov or call 1-800-383-4278.

If you have other questions or need help, call **(402) 447-6294**.

Sincerely,

Christie Wallin

Instructions for Completing the Free & Reduced Price School Meals Family Application

For households receiving benefits from the Supplemental Nutrition Assistance Program (SNAP), Temporary Assistance for Needy Families (TANF) or the Food Distribution Program on Indian Reservations (FDPIR), follow these instructions:

- Part 1:** List each child's name, the school they attend and their grade.
Part 2: Enter household's Master Case Number if the household qualifies for SNAP, TANF or FDPIR.
Part 3: Skip this part.
Part 4: Complete this part. An adult must sign the form.
Part 5: This part is optional and does not affect your children's eligibility for free or reduced price meals. If you do not select race or ethnicity, one may be selected based on visual observation.

For households with FOSTER, HOMELESS, MIGRANT or RUNAWAY CHILDREN, follow these instructions:

If all children in the household are foster children:

- Part 1:** List all foster children, the school they attend and their grade. Check the box indicating the child is a foster child.
Part 2: Skip this part.
Part 3: Skip this part.
Part 4: Complete this part. An adult must sign the form.
Part 5: This part is optional and does not affect your children's eligibility for free or reduced price meals. If you do not select race or ethnicity, one may be selected based on visual observation.

If some of the children in the household are foster children or are homeless, migrant or runaway children:

- Part 1:** List all children, the school they attend and their grade. Check the appropriate box.
Part 2: If the household does not have a Master Case Number, skip this part.
Part 3: Follow these instructions to report total household income from last month.
Column 1 – Household Members: List the first and last name of **each** person living in your household, related or not (such as grandparents, other relatives or friends) who share income and expenses. Attach another sheet of paper if necessary.
Column 2 - Gross Income and How Often it was Received: Gross income is the amount earned **before taxes and other deductions**; it is not your take-home pay. For each household member, list each type of income received for the month. You must also report how often the money is received – weekly, every other week, twice a month, or monthly.

Earnings from Work includes the following:

- Salary, wages, cash bonuses
- Net income from self-employment (farm or business)

If you are in the U.S. Military, include:

- Basic pay and cash bonuses (do not include combat pay, Family Subsistence Supplemental Allowance (FSSA) payments or privatized housing allowances)
- Allowances for off-base housing, food and clothing

Do not include income from SNAP, FDPIR, WIC, Federal education benefits and foster care payments.

Public Assistance/Child Support/Alimony includes the following:

- Unemployment benefits, Worker's compensation
- Supplemental Security Income (SSI), Cash assistance from state or local government
- Veteran's benefits (VA benefits), Strike benefits
- Child support payments, Alimony payments

Pensions/Retirement/All Other Income includes the following:

- Social Security payments (including railroad retirement and black lung benefits)
- Private pensions or Disability benefits
- Regular income from trusts or estates, Annuities, Investment income, Earned interest, Rental income and *Regular* cash payments received from outside the household.

If you have no income, write "0" or leave the income field blank. By doing this, you are certifying there is no income to report.

Household Size: Enter the total number of people in your household.

Social Security Number: The adult signing the form must list the last four digits of their Social Security Number (SSN) or check the box to the right labeled "Check if no SSN."

Part 4: Complete this part. An adult must sign the form.

Part 5: This part is optional and does not affect your children's eligibility for free or reduced price meals. If you do not select race or ethnicity, one may be selected based on visual observation.

Please note: Children who meet the definition of homeless, migrant or runaway, are eligible for free meals. However, the school district must have documentation on file from a migrant coordinator, homeless/runaway liaison or the district's Direct Certification list to approve the child for free meals.

For ALL other households, follow these instructions:

Part 1: List all children, the school they attend and their grade.

Part 2: If the household does not have a Master Case Number, skip this part.

Part 3: Follow these instructions to report total household income from last month.

Column 1 – Household Members: List the first and last name of **each** person living in your household, related or not (such as grandparents, other relatives or friends) who share income and expenses. Attach another sheet of paper if necessary.

Column 2 - Gross Income and How Often it was Received: Gross income is the amount earned **before taxes and other deductions**; it is not your take-home pay. For each household member, list each type of income received for the month. You must also report how often the money is received – weekly, every other week, twice a month, or monthly.

Earnings from Work includes the following:

- Salary, wages, cash bonuses
- Net income from self-employment (farm or business)

If you are in the U.S. Military, include:

- Basic pay and cash bonuses (do not include combat pay, Family Subsistence Supplemental Allowance (FSSA) payments or privatized housing allowances)
- Allowances for off-base housing, food and clothing

Do not include income from SNAP, FDPIR, WIC, Federal education benefits and foster care payments.

Public Assistance/Child Support/Alimony includes the following:

- Unemployment benefits, Worker's compensation
- Supplemental Security Income (SSI), Cash assistance from state or local government
- Veteran's benefits (VA benefits), Strike benefits
- Child support payments, Alimony payments

Pensions/Retirement/All Other Income includes the following:

- Social Security payments (including railroad retirement and black lung benefits)
- Private pensions or Disability benefits
- Regular income from trusts or estates, Annuities, Investment income, Earned interest, Rental income and *Regular* cash payments received from outside the household.

If you have no income, write "0" or leave the income field blank. By doing this, you are certifying there is no income to report.

Household Size: Enter the total number of people in your household.

Social Security Number: The adult signing the form must list the last four digits of their Social Security Number (SSN) or check the box to the right labeled "Check if no SSN."

Part 4: Complete this part. An adult must sign the form.

Part 5: This part is optional and does not affect your children's eligibility for free or reduced price meals. If you do not select race or ethnicity, one may be selected based on visual observation.

Return Completed Application to:						(Insert School Name & Mailing Address here)					
Part 1: Children in School											
List names of all children in school (First, Middle Initial, Last). If <u>all</u> children listed are foster, skip to Part 4 to sign the form. If some of the children are foster or are homeless, migrant or runaway children, complete all steps of the application.				Grade		Name of School Child Attends				Check all that apply: Foster Child Homeless, Migrant, Runaway	
										<input type="checkbox"/> <input type="checkbox"/>	
										<input type="checkbox"/> <input type="checkbox"/>	
										<input type="checkbox"/> <input type="checkbox"/>	
										<input type="checkbox"/> <input type="checkbox"/>	
										<input type="checkbox"/> <input type="checkbox"/>	
Part 2: Assistance Programs – SNAP, TANF or FDIPIR Benefits											
Enter MASTER CASE NUMBER if household qualifies for SNAP, TANF or FDIPIR: (Social Security numbers, Medicaid numbers and EBT numbers are not accepted.) Skip to Part 4											
Part 3: Total Household Gross Income – You must tell us how much and how often.											
1. Household Members List everyone in the household, current income each person earns in whole dollars (no cents) & how often. Entering "0" or leaving the income field blank certifies no income to report. A foster child's personal use income must be listed.				2. Gross Income (before taxes) and How Often it was Received							
				Earnings from Work before deductions		Public Assistance, Child Support, Alimony		Pensions, Retirement and All Other Income			
				Income	How often	Income	How often	Income	How often	Income	How often
Total Number of Household Members: (Children and Adults) _____				Last four digits of Social Security Number (SSN) of the adult signing this form: XXX – XXX – _____ Check if no SSN <input type="checkbox"/>							
Part 4: Adult Signature and Contact Information – An adult household member must sign the application.											
<i>"I certify (promise) that all information on this application is true and that all income is reported. I understand that this information is given in connection with the receipt of Federal funds and that school officials may verify (check) the information. I am aware that if I purposely give false information, my children may lose meal benefits and I may be prosecuted under applicable State and Federal laws."</i>											
Sign here:				Print name:				Date:			
Street Address (if available):						Zip:		Daytime Phone:			
Part 5: Children's Ethnic and Racial Identities – Optional											
Check one Ethnic Identity: – and –				Check one or more Racial Identities:							
<input type="checkbox"/> Hispanic or Latino				<input type="checkbox"/> Asian		<input type="checkbox"/> Black or African American		<input type="checkbox"/> Native Hawaiian or other Pacific Islander			
<input type="checkbox"/> Not Hispanic or Latino				<input type="checkbox"/> White		<input type="checkbox"/> American Indian or Alaskan Native					
Do Not Fill Out the Section Below - For School Use Only											
Annual Income Conversion:				Weekly X 52;		Every 2 weeks X 26;		Twice a month X 24;		Monthly X 12	
Total Household Size: _____				<input type="checkbox"/> Free		<input type="checkbox"/> Reduced		<input type="checkbox"/> Denied			
				<input type="checkbox"/> Income		<input type="checkbox"/> Income		Reason for denial:			
Total Income: _____ per				<input type="checkbox"/> Categorically eligible:				<input type="checkbox"/> Income too high			
<input type="checkbox"/> Year <input type="checkbox"/> Month <input type="checkbox"/> 2 X Mo <input type="checkbox"/> Every 2 Wks <input type="checkbox"/> Week				<input type="checkbox"/> SNAP/TANF/FDIPIR				<input type="checkbox"/> Incomplete application			
				<input type="checkbox"/> Foster Child							
				<input type="checkbox"/> Homeless/Migrant/Runaway:							
				(Official Documentation Required at School)							
Signature of Determining Official:						Date Approved:					
FOR THE VERIFICATION PROCESS ONLY:											
Signature of Confirming Official:						Date Confirmed:					
Signature of Verifying Official:						Date Verified:					
						Date Withdrawn From School:					

Free & Reduced Price School Meals Family Application – complete one application per household Attachment C: 2025-26

Your children may qualify for free or reduced price meals if your household income falls at or below the limits on this chart.

FEDERAL INCOME CHART for School Year 2025-26					
Household size	Yearly	Monthly	Twice per Month	Every Two Weeks	Weekly
1	28,953	2,413	1,207	1,114	557
2	39,128	3,261	1,631	1,505	753
3	49,303	4,109	2,055	1,897	949
4	59,478	4,957	2,479	2,288	1,144
5	69,653	5,805	2,903	2,679	1,340
6	79,828	6,653	3,327	3,071	1,536
7	90,003	7,501	3,751	3,462	1,731
8	100,178	8,349	4,175	3,853	1,927
Each additional person:	10,175	848	424	392	196

The **Richard B. Russell National School Lunch Act** requires the information on this application. You do not have to give the information, but if you do not, we cannot approve your child for free or reduced price meals. You must include the last four digits of the social security number of the adult household member who signs the application. The last four digits of the social security number are not required when you apply on behalf of a foster child or you list a Supplemental Nutrition Assistance Program (SNAP), Temporary Assistance for Needy Families (TANF) Program or Food Distribution Program on Indian Reservations (FDPIR) case number or other FDPIR identifier for your child or when you indicate that the adult household member signing the application does not have a social security number. We will use your information to determine if your child is eligible for free or reduced price meals and for administration and enforcement of the lunch and breakfast programs. We may share your eligibility information with education, health and nutrition programs to help them evaluate, fund or determine benefits for their programs, auditors for program reviews and law enforcement officials to help them look into violations of program rules.

Non-Discrimination Statement: This explains what to do if you believe you have been treated unfairly.

In accordance with federal civil rights law and U.S. Department of Agriculture (USDA) civil rights regulations and policies, this institution is prohibited from discriminating on the basis of race, color, national origin, sex (including gender identity and sexual orientation), disability, age, or reprisal or retaliation for prior civil rights activity.

Program information may be made available in languages other than English. Persons with disabilities who require alternative means of communication to obtain program information (e.g., Braille, large print, audiotope, American Sign Language), should contact the responsible state or local agency that administers the program or USDA's TARGET Center at (202) 720-2600 (voice and TTY) or contact USDA through the Federal Relay Service at (800) 877-8339.

To file a program discrimination complaint, a Complainant should complete a Form AD-3027, USDA Program Discrimination Complaint Form which can be obtained online at: <https://www.usda.gov/sites/default/files/documents/USDA-OASCR%20P-Complaint-Form-0508-0002-508-11-28-17Fax2Mail.pdf>, from any USDA office, by calling (866) 632-9992, or by writing a letter addressed to USDA. The letter must contain the complainant's name, address, telephone number, and a written description of the alleged discriminatory action in sufficient detail to inform the Assistant Secretary for Civil Rights (ASCR) about the nature and date of an alleged civil rights violation. The completed AD-3027 form or letter must be submitted to USDA by:

- (1) Mail: U.S. Department of Agriculture
Office of the Assistant Secretary for Civil Rights
1400 Independence Avenue, SW
Washington, D.C. 20250-9410
- (2) Fax: (833) 256-1665 or (202) 690-7442; or
- (3) Email: program.intake@usda.gov

This institution is an equal opportunity provider.

NEWMAN GROVE PUBLIC SCHOOLS
~SUGGESTED SUPPLY LIST~
2025-2026

Kindergarten

Bookbag
 12 Glue Sticks
 2 Erasers
 Scissors (Metal)
 Pencil Box (5"x9")
 2 Notebooks
 2 - 2 Pocket Folders
 2 Pkgs. Crayola Washable Markers
 (Classic Color 10 Ct)
 2 Boxes Crayola Crayons (24 count)
 Kids Headphones (No Earbuds)
 2 Clorox Wipes
 Velcro PE Shoes
 2 Boxes of Kleenex
 Water Bottle
 Classroom Supply of Snacks

First Grade

Bookbag
 12 Glue Sticks
 2 Big Erasers
 Pencils (#2 Lead)
 Scissors-metal
 Pencil Box (5"x9")
 1- Pocket Folder
 2 Pkgs. Crayola Washable Markers
 (Classic Color 10 Ct)
 2-Boxes Crayola Crayons (24 Count)
 1- Clorox Wipes
 Kids Headphones (No Earbuds)
 PE Shoes
 2-Boxes of Kleenex (long box)
 1 inch 3 Ring Binder with pockets
 inside & insert on the front
 Water Bottle
 Classroom Supply of Snacks

Second Grade

Bookbag
 6 Glue Sticks
 4 oz Bottle White Glue
 3 Big Erasers
 Small Pointed Scissors
 2 Pkgs. Clorox Wipes
 Pencil Box (5"x9")
 3 Spiral Notebooks - Wide Ruled
 4 Pocket Folders with Prongs
 2 Sets of Crayola Markers (10
 Count)
 2 Boxes Crayola Crayons (24 Count)
 2 Boxes of Kleenex
 Pencils (#2 Lead)
 PE Shoes
 Kids Headphones (No Earbuds)
 Classroom supply of snacks

Third Grade

PE Shoes
 2-3 Boxes of Kleenex
 Girls Clorox Wipes
 Boys Hand Sanitizer
 Pocket Folder
 Wide Ruled Loose paper
 3 Subject Spiral Notebook
 1 Large Glue Stick
 Small Pointed Scissors
 Cap Erasers (Pentel brand are best)
 Large Eraser (Pentel brand are best)
 Package of Ticonderoga Pencils
 12 Count Colored Pencils
 24 Count Crayons (No bigger)
 10 Count Markers Regular (no thin)
 6 to 8 Dry Erase Markers
 Headphones (No Bluetooth)
 Pencil Box (5"x9")
 Classroom Supply of Snacks
 Water Bottle
 ~Optional/Not Necessary~
 Highlighter, Colorful Pens,
 1.3 mm Mechanical Pencils (extra
 lead)
 Please Label All Supplies

Fourth Grade

2 Boxes of Pencils (#2 Lead)
 4 Glue Sticks
 Erasers
 Scissors-pointed
 12" Ruler (inches/centimeters)
 1 Pkg. Clorox Wipes
 4 Spiral Notebooks (70/80 Pages)
 3 Pocket Folders
 Markers (Skinny and Fat)
 Crayons
 Colored Pencils
 2-3 Boxes of Kleenex
 PE Shoes
 Highlighter
 Earbuds for Personal Use
 Water bottle
 Pencil Box



Fifth Grade

1 Large Glue Stick
 Erasers (Pentel brand are best)
 Scissors
 4 oz Bottle White
 Pencils (Ticonderoga brand are best)
 1 Pencil Pouch (for hanging)
 24 Count Colored Pencils
 24 Count Crayons
 10 Count Markers
 1 Pen (Blue, Black, and Red)
 1 Pkg. of 4 Highlighters (variety)
 12" Ruler (inches/centimeters)
 4 Spiral Notebooks (70/80 Pgs)
 1 Composition Notebook
 1 small pkg. Loose Leaf Paper
 1 inch - 3 Ring Binder
 1 Pkg. of 5 Plastic Binder Dividers
 with Pockets
 2 Boxes of Kleenex
 PE Shoes
 Earbuds for Personal Use
 Water bottle

Sixth Grade

Eraser
 Scissors
 Colored Pencils
 Pencils (#2 Lead)
 Pencil Box (5"x9")
 Washable Markers (Multi-colored)
 Crayons
 3 Pens (Blue, red, & Green)
 Small Bottle White Glue
 Glue Sticks
 Highlighters
 Personal Dry Erase Markers
 2 Pocket Folders with Prongs
 White-out
 1 Pkg. Notebook Paper
 1 Pkg. Clorox Wipes
 Hand Sanitizer
 2 Boxes of Kleenex
 12" Ruler (inches/centimeters)
 5 Spiral Notebooks (70/80 pages)
 2 Binders
 Pkg of binder dividers (need at least
 7)
 Pkg. of Lined Index cards
 PE Shoes
 Headphones for Personal Use
 Scientific Calculator Texas
 Instruments (TI-30X IIS)
 Water Bottle

NEWMAN GROVE PUBLIC SCHOOLS
~SUGGESTED SUPPLY LIST~
2025-2026

7th-8th Grade Classes

Bookbag
Colored Pencils
Pencils
Pens (Blue, Black, Red)
Folders
Multi Colored Highlighters
Scissors
Markers
Loose Leaf Paper
Ruler (Inches/Centimeters)
100 Index Cards (3"x5")
Scientific Calculator (Texas Instruments TI-30X IIS)
4 Notebooks-40 pg minimum for each class
Trifold poster board for science fair

7th-8th Grade PE

Gym Shorts
T-Shirts
White Socks
Athletic Supporters
Deodorant
PE Shoes
Ponytail Holders
Towel

Jr-Sr High Classes

Accounting Class

3-Ring Binder
Notebook

Ag Education

1 Inch Binder
Welding Class-
Close-Toed Shoes
Jeans
Pens/Pencils

Business

3-Ring Binder (2"-3")
Pens/Pencils
Notebook

Computer

3-Ring Binder 2" wide

English 9-12

Pens/Pencils
1 Notebook with 5 subjects (we will use this for reading, writing, vocab, and grammar)
College Ruled Notebook Paper
Book Cover for Grammar Textbook
2 English folders (1 for each semester due to wear and tear)

Math 9-12

Notebooks (Notes)
Pocket Folder
Ruler
Pencils
Book Cover for Textbook
Scientific Calculator
(Texas Instruments TI-30X IIS)
Trigonometry
(Texas Instruments 83 or 84 Plus)

World Geography/World History/American History and Government

Pens/Pencils
Folder for each class
Book Cover

Science 7-12

Scientific calculator for Physical Science and Chemistry
(Texas Instruments 83 or 84 Plus)
Pencils

Industrial Tech

Pencil
12' tape measure
ANSI rated safety glasses are required but may be purchased from the instructor if needed
Closed toe shoes are required in class

All students need a good supply of pens, pencils, folders & notebooks for all classes. **No wireless ear buds for students!**

Volleyball

Shoes comfortable for athletic competition
Black Shorts for Games
Knee Pads

Football

Football shoes or shoes with rubber cleats or replacement cleats
Black/White Socks
Can get your own mouthpiece
Water bottles

Basketball

High Top Shoes
Water Bottles

Wrestling

Wrestling Shoes

Track & Cross Country

Running Shoes (See coaches for recommendations)





Newman Grove Public School Picture Day is Tuesday, August 19, 2025

You have the choice of over 60 backgrounds, and you may also use more than one background (and pose) in your package. This can all be previewed online when you receive your proofs. If you prefer the traditional blue background, that is one of the choices. Due to the variety of choices, all orders must be placed online, but if you prefer to pay with cash or check, that option is available.

Proofs: About 2 weeks after Picture Day you will receive a **Proof** of your student's **2 poses**. The Proof has the **Website** and **Password** to place your order **online**.

If you do not wish to pay with a credit card: **Still place the order online** and select **Cash** or **Check** as the **method of payment** upon checkout. Place cash or check in the **Payment Envelope** that came with your Proof. Write your **Order Confirmation Number** from your online order on the **Payment Envelope**.

Family Plan: When you pay for two children in your family, this qualifies you for a FREE package of equal or lesser value for all other children in your family. If you qualify for the Family Plan, here is how to obtain your FREE packages: After placing your two paid orders, you may place your additional orders online, but instead of paying, choose payment type: FAMILY, and click APPLY, and submit. Then simply email info@pegasus-si.com with the two **Order Confirmation Numbers** that have been **paid** in full **along with the Order Confirmation Number** for the order that is **FREE**. Please be sure to **order** and **send email prior** to the **Due Date** on the proof to avoid any late fees – Do NOT wait for all student's proofs as deadline dates may vary if they attend another school or are a Retake. Your FREE order is ON HOLD until you email the Confirmation Numbers.

Retakes: If you prefer to have a retake, you may do so for any reason on Retake Day. Wait until you get your RETAKE Proof to place an order at that time. If you decide to order from your original Proof rather than the Retake, you'll receive a late fee, as it is past the Order Due Date.

Due Date: On your proof is an Order Due Date. If you submit your order AFTER the Due Date, you'll have a \$10 late fee and late orders can take up to 6 – 8 weeks after ordering.

Pegasus School Images

Cut here -----

Note to separated or divorced parents: Mom and Dad may receive different PASSWORDS/Proofs ONLY IF
your student **tells the photographer: "I need 2 sets of proofs"**
To help your student remember to request this, you may use this Reminder Slip.

ONLY For parents living separately: Fill out information below & have your student give this note to photographer while sitting at the camera for school pictures on

Newman Grove Public School Picture Day -- Tuesday, August 19, 2025

☐ Please provide **TWO Order PROOF FORMS** for:

STUDENT'S NAME: _____ **Grade** _____
to allow Mom and Dad to order separately.

Newman Grove Breakfast & Lunch Menu

(Variety of low fat & fat free milks offered with each meal) (Menus are subject to change without notice)

Due to change in Federal Guidelines the PK will not be receiving the desserts listed.



Scott's Meat Mission (Made with locally donated beef)

August/September 2025

MONDAY	TUESDAY	WEDNESDAY	THURSDAY	FRIDAY
August 11 Donut/Long John Fresh Fruit & Juice Breaded Pork Patty Mashed Potatoes/ Gravy Corn Mandarin Oranges	August 12 Waffle Fresh Fruit & Juice Scalloped Potatoes & Ham Peas Peaches Dinner Roll	August 13 Chocolate Mini Loaf Fresh Fruit & Juice Lasagna Mixed Veggies Tropical Fruit Garlic Bread Scott's Meat Mission	August 14 Egg Patty & Toast Fresh Fruit & Juice Cheesy Chicken Broccoli Pears Dinner Roll	August 15 Sausage Gravy Over Biscuits Fresh Fruit & Juice Hamburger Gravy Over Mashed Potatoes Green Beans Applesauce Dinner Roll
August 18 Cheese Omelet & Bacon Fresh Fruit & Juice Tater Tot Casserole Mixed Vegetables Fruit Cocktail Dinner Roll	August 19 Breakfast Pizza Fresh Fruit & Juice Breaded Beef Patty Mashed Potatoes & Gravy Corn Mandarin Oranges	August 20 Banana Bread Fresh Fruit & Juice Hamburger Broccoli Apples Cookie	August 21 Egg Round & Sausage Fresh Fruit & Juice Chicken Nuggets Potato Wedges Mixed Berries Dinner Roll	August 22 Breakfast Sandwich Fresh Fruit & Juice Chicken Fajita Guacamole Beans Spanish Rice Pineapple
August 25 French Toast Sticks Fresh Fruit & Juice Meatball Sub Sandwich Green Beans Applesauce Cookie	August 26 Muffin Fresh Fruit & Juice Chicken Alfredo Broccoli Pears Garlic Bread	August 27 Sausage Pancake Wrap Fresh Fruit & Juice Flying Saucer Peas Peaches Dinner Roll	August 28 Egg Patty & Toast Fresh Fruit & Juice McRib Sandwich Baked Beans Tropical Fruit	August 29 Donut Fresh Fruit & Juice Pizza Corn Mandarin Oranges
September 1 NO SCHOOL	September 2 Granola Bar Fresh Fruit & Juice Turkey Sub Sandwich Chips Baby Carrots Peaches	September 3 Cinnamon Roll Fresh Fruit & Juice Chicken Stir Fry & Veggies over Rice Pineapple Dinner Roll	September 4 Pancake Fresh Fruit & Juice Sloppy Joe Sandwich Baked Beans Pears Scott's Meat Mission	September 5 Long John Fresh Fruit & Juice Pancake Sausage Wrap Egg Round Tri Tater Mixed Fruit
September 8 Cini Minis Fresh Fruit & Juice Rotini Green Beans Peaches Bosco Stick Scott's Meat Mission	September 9 French Toast Sticks Fresh Fruit & Juice Popcorn Chicken Baked Beans Pineapple	September 10 Breakfast Sandwich Fresh Fruit & Juice Pulled Pork Sandwich Corn Applesauce	September 11 Strudel Fresh Fruit & Juice Breaded Patty Mashed Potatoes & Gravy Mandarin Oranges Dinner Roll	September 12 Sausage Gravy Over Biscuits Fresh Fruit & Juice Grilled Chicken Breast Sandwich Mixed Veggies Pears Dessert

<div>August ▼</div> <div>2025 ▼</div>						
Sunday	Monday	Tuesday	Wednesday	Thursday	Friday	Saturday
					1	2
3	4 ● 4:00pm: HS CC: Conditioning to begin (in SE) <div>FFA Chapter Retreat</div>	5 <div>Back to School Registration 3:00-6:00 p.m.</div>	6 <div>Teacher In-Service</div>	7 ● 6:00pm: Preschool Orientation (HS Library) <div>Teacher In-Service</div>	8 <div>Teacher In-Service</div>	9 <div>NG/SE Booster Club Golf Tournament</div>
10	11 <div>First Day of School For Students K-12; Early Dismissal 1:00</div> <div>Start of Fall HS Practices</div> <div>JH & HS CC: Practice Begins (in NG)</div> <div>● 7:30pm: Board of Education Meeting</div>	12 <div>First Day of Preschool</div>	13 ● 7:30am: FFA Officer Meeting	14 <div>JHFB & JHVB Practice Begins</div>	15	16
17	18	19 ● 5:00pm: HSVB: Jamboree in Sargent (A) <div>School Picture Day</div> <div>● 7:00pm: FFA Meeting & Family Cookout (@ city park)</div>	20	21	22 <div>Senior Careers (1st Period)</div>	23
24	25	26	27	28 ● 9:30am: JH/HS XC: St. Paul (A) ● 5:00pm: HSVB: Grand Island Lutheran (A) <div>FFA State Fair Day (GI)</div>	29 <div>Senior Careers (2nd Period)</div> <div>● 7:00pm: FB: Summerland (A)</div>	30

MISSION STATEMENT

Newman Grove Public School District is committed to providing a safe environment where all students can develop academically. Students will be provided opportunities to acquire skills needed to accomplish their goals and to develop their potential as life-long learners, which will allow students to participate in and contribute to society.

<div> <div>September</div> <div>2025</div> </div>						
Sunday	Monday	Tuesday	Wednesday	Thursday	Friday	Saturday
	1 No School - Labor Day Vacation	2 ● 7:30am: FFA Officer Meeting ● 3:40pm: CILT Meeting ● 4:00pm: JHFB: Palmer (in SE) ● 5:30pm: HSVB: Fullerton (in NG) ● 6:30pm: JVFB: Palmer (in SE)	3 ● 9:00am: Lions Mobile Screening - (Library in Use) FFA Answer Plot Tour Day (Norfolk) Prom Meeting (lunch)	4 ● 5:00pm: HSVB: Grand Island Lutheran (A) FBLA Meeting (lunch)	5 ● 10:00am: JH/HS XC: Boone Central (A) ● 1:30pm: Grandparents Day @ City Park ● 7:00pm: FB: Lutheran High Northeast (in SE)	6
7 Grandparents Day	8 ● 2:00pm: JHVB: Fullerton (in SE) ● 4:30pm: JHFB: Howells-Dodge (A) Senior Class Meeting (lunch) ● 6:30pm: JVFB: Central Valley (A) ● 7:00pm: FFA Meeting ● 7:30pm: Board of Education Meeting	9 ● 5:00pm: HSVB: Burwell Triangular (in SE) Skills Meeting (lunch)	10 ● 7:30am: Monthly Staff Meeting FFA Husker Harvest Days (GI)	11 ● 10:00am: JH/HS XC: Laurel-Concord (A) NHS Meeting (lunch) ● 6:00pm: HSVB: Nebraska Lutheran (in NG)	12 ● 1:30pm: Homecoming Pep rally (@ the Football Field) ● 3:00pm: FB: Winside (in NG) Speech Meeting (lunch) in Preschool Classroom Senior Careers (1st Period) Homecoming Coronation (following FB game) Homecoming Dance (time TBD)	13 ● 11:00am: HSVB: Elba Tournament (A)
14	15 ● 4:30pm: JHVB: Columbus Immanuel Lutheran (A) ● 4:30pm: JHFB: Humphrey (in NG) HS HAL Meeting (lunch) ● 6:30pm: JVFB: Humphrey (in NG)	16 ● 5:00pm: HSVB: Elba Tri (A) ISR Meeting (lunch)	17 ● 2:00pm: JHVB: Nebraska Christian (A) FFA District Greenhand Day (Freshmen)(@ CCC) Student Council Meeting (lunch)	18 ● 5:30pm: HSVB: Osmond (in SE)	19 ● 3:30pm: JH/HS XC: O'Neill (A) Senior Careers (2nd Period) Camp Timberlake (7th grade) ● 7:00pm: FB: David City (A)	20 ● 10:00am: JVVB: Riverside Tournament (A)
21	22 ● 4:30pm: JHFB: Archangels (A) ● 6:30pm: JVFB: Archangels (A)	23 ● 5:00pm: HSVB: High Plains Triangular (A)	24 ● 2:30pm: JHVB: Archangels (A) FFA - Farm Safety Day PTO Book Fair (Set up in Library)	25 ● 1:00pm: 1:00 Dismissal/Parent-Teacher Conferences 2:00-8:00 PTO Book Fair in Library ● 6:00pm: Senior Parent Meeting (Media Center)	26 ● 3:00pm: FB: Humphrey (in SE) ● 4:00pm: JH/HS XC: Ord (A) No School/Teacher In-Service	27
28	29 ● 4:00pm: JHVB: Madison (in NG) ● 4:00pm: JHFB: Cross County (in SE) ● 6:30pm: JVFB: Fullerton (in SE)	30 ● 5:30pm: HSVB: Stuart (varsity only)				